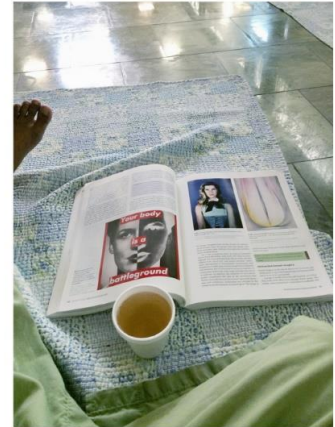


RENA BRANSTEN GALLERY

The Portrait Show

June 23 – August 18, 2018

Reception July 7 / 5-7pm



Rena Bransten Gallery is pleased to present *The Portrait Show*, a group exhibition exploring portraiture from traditional to non-traditional approaches in a range of media including photography, painting, sculpture, and works on paper. This exhibition will include works by Robert Arneson, John Bankston, Dawoud Bey, Leon Bornensztein, Jonathan Calm, Lawrence Ferlinghetti, Rupert Garcia, Jennifer Greenburg, Oliver Lee Jackson, Eirik Johnson, Arnold Kemp, Bovey Lee, David Linger, Hung Liu, Tracey Moffatt, Martin Mull, Vik Muniz, Tameka Jenean Norris, Raymond Pettibon, Naaman Rosen, Thomas Ruff, Salomé, Alice Shaw, Tracey Snelling, William Steig, Lava Thomas, Kumie Tsuda, Tara Tucker, John Waters, Lewis Watts, Henry Wessel, and Sue Williams.

This diverse grouping of works spans the humorous to the somber, nodding to the rich history of the portrait while aiming to expand its boundaries.

Several works in the exhibition challenge the notion that a portrait should feature a face or figure. Naaman Rosen's *Letters: A Portrait of a Family* consists of scanned letters sent from his mother, the words "Love You" stretched across a lined note pad in one, news of his brother's imprisonment in another. Tameka Jenean Norris' *Office Hours* is a photograph of a cup of tea and an art history book, the artists' toes barely visible at the edge of the frame. Bovey Lee's cut paper work *Petition for a Nonimmigrant Worker* is a photo transfer of the artist's own immigration paper work, incised with sea imagery.

Some artists in the exhibition use themselves as subject, but not always in the vain of self-portraiture. Jennifer Greenburg works with vernacular found photographs, but replaces the subject with herself, blending cultural narratives with the personal. Jonathan Calm uses his own body in *Double Vision: (Recording I)*, but the work expands beyond the self-portrait: his vulnerable figure lies on the pavement, a camera lens in his mouth recording footage of police brutality against black bodies.

Complimenting these non-traditional approaches are more traditional portraits. In some, artists render other artists in what feel like gestures of mutual admiration – Rupert Garcia of Picasso, and Henry

RENA BRANSTEN GALLERY

Wessel of Dennis Gallagher. In others, the artist looks directly at his subject, as in Dawoud Bey's close-up portrait *Girl with a Knife Nose Pin*, or directly at themselves, as in Thomas Ruff's *Self Portrait*.

1



Eirik Johnson

Sawdust Mountain: Colin, Sucher and Sons, 2006

Archival pigment print, ed. 2/10

24 5/8 x 30 5/8 in.

2



Lewis Watts

Luma Kanda In His Bookstore. Oakland, 1995

Archival pigment print

Ed. of 10

Ed. 2/10 **SOLD**

28 3/4 x 24 in.

3



Naaman Rosen

Letters: A Portrait of a Family, Letter #11, 2005/2016

Archival pigment print, ed. 2/12

20 5/8 x 16 3/4 in.

4



John Waters

Sophia Loren Decapitated, 1998

Chromogenic prints, ed. 7/8

14 3/4 x 66 3/4 in.

5



Jonathan Calm

Double Vision (Recording I), 2018

Archival pigment print, ed. 2/6

46 1/2 x 56 1/4 in.

6



Kumie Tsuda

I can't say who I am, 2013

Ceramic, paper

15 3/8 x 6 1/4 x 7 1/8 in.

RENA BRANSTEN

GALLERY

7



Dawoud Bey

Girl with a Knife Nose Pin, 1990/2018

Archival pigment print, ed. 2/4

49 7/8 x 41 5/8 in.

8



Oliver Lee Jackson

No. 11, 2018 (5.6.18), 2018

Oil enamels, gold leaf on panel

23 x 23 in.

9



Martin Mull

Painter, 2006

Oil on paper

25 3/4 x 25 1/2 in.

10



Lawrence Ferlinghetti

The Painter, 1989

Oil on canvas

36 x 40 in.

11



Henry Wessel

Untitled, 1982

Gelatin silver print

17 x 21 in.

12



Rupert Garcia

Pablo Picasso, 1973

Color silkscreen on white wove paper, AP

32 1/2 x 26 1/4 in.

RENA BRANSTEN GALLERY

13



Hung Liu
Rena, 2018
Oil on canvas
25 1/4 x 25 x 1/8 in.

14



Tameka Norris
Office Hours, 2016
Digital c-print, ed. 3/5
30 3/4 x 24 3/4 in.

15



Tara Tucker
Blank Space, 2016
Graphite on paper
31 1/2 x 26 1/2 in.

16



Leon Borenzstein
American Portraits Series: Lady with Dog, San Francisco, CA, 1983
Gelatin silver print, ed. 8/30
24 1/4 x 20 1/4 in.

17



Leon Borenzstein
American Portraits Series: Woman with Dogs, Russian River, CA, 1993
Gelatin silver print, ed. 6/30
24 1/4 x 20 1/4 in.

18



Tracey Moffatt
Scarred for Life, II (Responsible But Dreaming, 1984)
1999
Offset lithograph, ed. 16/60
35 1/2 x 27 1/2 in.

RENA BRANSTEN

GALLERY

19



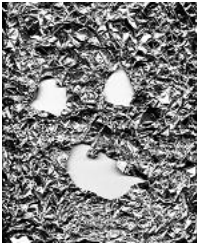
Tracey Snelling

Harvey, San Pablo Avenue, Oakland, 2008

Wood, paint, lights, digital images, lcd screen, media player, speaker, transformer, ed. 3/5

13 1/2 x 31 x 4 in.

20



Arnold Kemp

Who's Afraid of Something Real, 2012

Archival pigment print on Somerset paper in artist's frame, unique

44 1/2 x 36 in.

21



Lava Thomas

Untitled Childhood Portrait, 2016

Water based oil on canvas

46 x 46 in.

22



Jonathan Calm

Body Language, 2018

Archival pigment prints

Ed. of 6

Ed. 2/6 **SOLD**

74 1/2 x 42 7/8 in. each

23



Bovey Lee

A Tale of Two Flowers, 2018

Cut paper, Chinese xuan paper on silk

37 1/2 x 32 3/4 in.

24



Vik Muniz

Pictures of Magazine 2: Seated Black Woman, after

Felix Vallotton, 2013

Digital c-print, ed. 6/6

55 x 43 1/2 in.

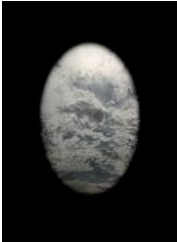
RENA BRANSTEN GALLERY

25



Thomas Ruff
Self Portrait, 1988
Cibachrome, ed. of 4
84 x 65 in.

26



Lava Thomas
Cloudscape Portrait 9401, 2015
Laminated pigment print on metallic paper, MDF
Ed. 1/3
58 5/8 x 43 in.

27



Robert Arneson
Splatt, 1983
Bronze head, ed. 2/3, unique ceramic base
74 x 18 x 18 in.

28



Henry Wessel
Unknown Dennis Gallagher Studio, c. 1991
gelatin silver print
18 1/4 x 24 1/8 in.

29



Salomé
Trish Above LA, 1988
Acrylic on canvas
84 x 60 in.

30



Bovey Lee
Petition for a Nonimmigrant Worker, 2016
Photo transfer - cut paper
25 1/2 x 27 in.

RENA BRANSTEN

GALLERY

31



Lewis Watts

Billie Holiday's Passport, Courtesy of John Goddard, Village Music, Mill Valley, 2006

Archival pigment print

Ed. of 10

Ed. 3/10 **SOLD**

29 1/4 x 21 1/4 in.

32



Raymond Pettibon

Ronald Reagan

Pen and ink on paper

17 x 14 in.

33



Naaman Rosen

Letters: A Portrait of a Family, Letter #17, 2005/2016

Archival pigment print, ed. 2/12

20 5/8 x 16 3/4 in.

34



David Linger

Self-Portrait, 2017

Undergalze screen print on translucent porcelain

29 1/2 x 21 1/2 x 1/8 in.

35



Jennifer Greenburg

I've always preferred my own birthday, 2013

Archival inkjet print, ed. 2/3

30 x 36 in.

36



Alice Shaw

Untitled

Archival pigment print

19 3/4 x 17 1/4 in.

RENA BRANSTEN GALLERY

37



William Steig
Untitled, ND
Pen on paper
12 3/4 x 13 1/4 in.

38



Sue Williams
Untitled, 1992
Photos, paint and ink on mat board
16 3/4 x 12 in.

39



John Bankston
Little Lulu, 2018
Oil on Arches oil paper on panel
20 x 16 in.

40



Hung Liu
Portrait of Rena as Snow White
Oil on shaped canvas
21 1/2 x 8 1/8 in.